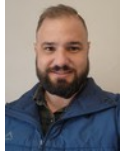




Nico Human
 Non-Principal Property Practitioner
 Registered with PPRA (FFC 113 663 3)
 082 770 2128
 nico.human@rawson.co.za



Rudi Papenfus
 0849838226
 rudi.p@rawson.co.za

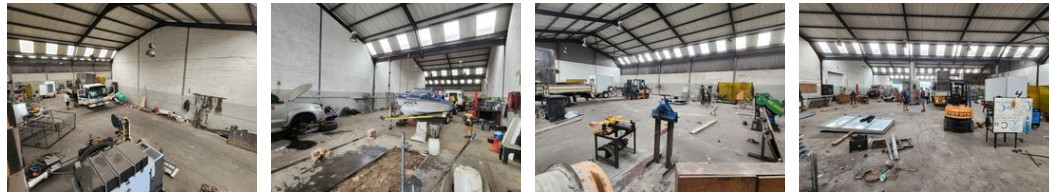
Contact Rawson Commercial
 Cape Metropole - Blouberg Franchise

021 556 2474

9 Blaauwberg Road
 Blouberg
 7441



Web Ref CL18566



R94,500 pm

Gross Monthly Rental R94,500 Excl. VAT

0 10

1270m2 WAREHOUSE TO RENT IN BELLVILLE

High-Exposure 1270m2 Warehouse with 200m2 Yard in Bellville - Prime Location

This well-located **1270m2 warehouse** in Bellville offers **excellent exposure, visibility, and signage opportunities**, making it an ideal space for a range of commercial operations. A **key feature** of this property is the **200m2 yard space**, providing additional outdoor storage, parking, or loading flexibility. Whether you need space for **warehousing, distribution, light manufacturing, or other business uses**, this property delivers the perfect combination of accessibility and functionality.

Warehouse Highlights:

- Prime location with **excellent visibility and signage potential**
- **200m2 yard space**, ideal for additional storage or truck access

Features

Zoning Industrial

Interior

Power 3 Phase Yes
 Power Amps 80

Exterior

Open Parking Bays 10

Sizes

Floor Size 1,270m²
 Building Height 7m

