



Nico Human
 Non-Principal Property Practitioner
 Registered with PPRA (FFC 113 663 3)
 082 770 2128
 nico.human@rawson.co.za



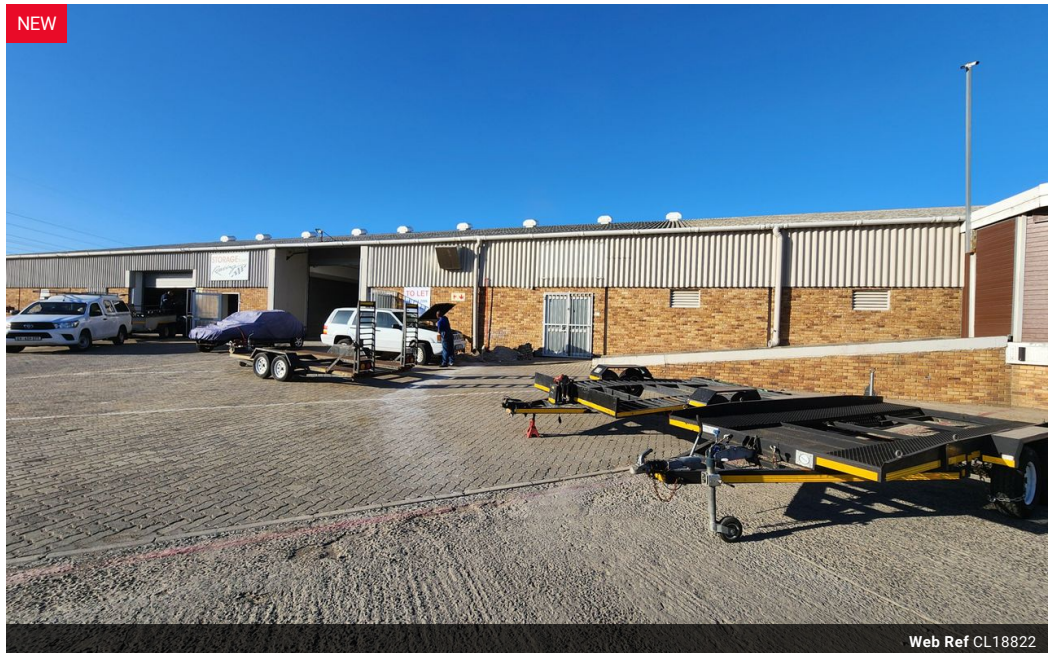
Rudi Papenfus
 0849838226
 rudi.p@rawson.co.za

Contact Rawson Commercial
 Cape Metropole - Blouberg Franchise

021 556 2474

9 Blaauwberg Road
 Blouberggrant
 7441

NEW



Web Ref CL18822



R24,000 pm

Gross Monthly Rental R24,000 Excl. VAT

0 5

357m² WAREHOUSE TO RENT IN BELLVILLE

357m² WAREHOUSE TO LET IN BELLVILLE - PRIME INDUSTRIAL HUB

This 357m² warehouse is situated in the industrial hub of Bellville, offering excellent exposure and signage opportunities for businesses looking to establish a strong presence.

Key Features:

Good Office Space for administrative operations

Warehouse Offices for on-site management

Spacious Warehouse Floor Area

Roller Shutter Door for easy access and efficient loading/unloading

Good Natural Light for a well-lit working environment

Features

Building Name Unit 10
Zoning Industrial

Interior
 Power 3 Phase Yes
 Power Amps 80

Exterior
 Security Yes
 Open Parking Bays 5

Sizes
 Floor Size 357m²
 Building Height 7m

