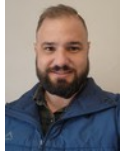




Nico Human
 Non-Principal Property Practitioner
 Registered with PPRA (FFC 113 663 3)
 082 770 2128
 nico.human@rawson.co.za



Rudi Papenfus
 0849838226
 rudi.p@rawson.co.za

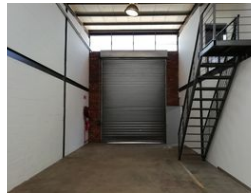
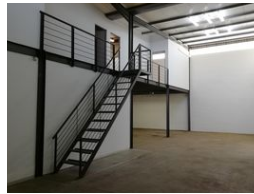
Contact Rawson Commercial
 Cape Metropole - Blouberg Franchise

021 556 2474

9 Blaauwberg Road
 Blouberggrant
 7441



Web Ref CL18625



R20,000 pm

Gross Monthly Rental R20,000 Excl. VAT

0 3

280m² WAREHOUSE TO LET IN SAXENBURG PARK

280m² Warehouse To Let in Saxenburg Park, Blackheath

This modern 280m² industrial warehouse is centrally located in **Saxenburg Park, Blackheath**, offering excellent access to major transport routes, including **Van Riebeeck Road, Polkadraai Road, R300, N2, and N1**.

Ideal for **warehousing, distribution, and light manufacturing**, this unit provides a functional layout with a good balance of office and warehouse space.

Key Features:

- **Good warehouse space** with excellent height to eaves
- **Ample office space** with air conditioning in all offices
- **Large reception area**
- **Kitchenette** for staff convenience
- **Ablutions** for staff
- **Roller shutter door** for efficient loading and offloading
- **Alarm system** for added security

Features

Building Name	Unit 12			Sizes	
Zoning	Industrial			Floor Size	280m ²
Interior		Exterior		Building Height	6m
Power 3 Phase	Yes	Open Parking Bays	3		
Power Amps	60				

