



Rudi Papenfus
0849838226
rudi.p@rawson.co.za



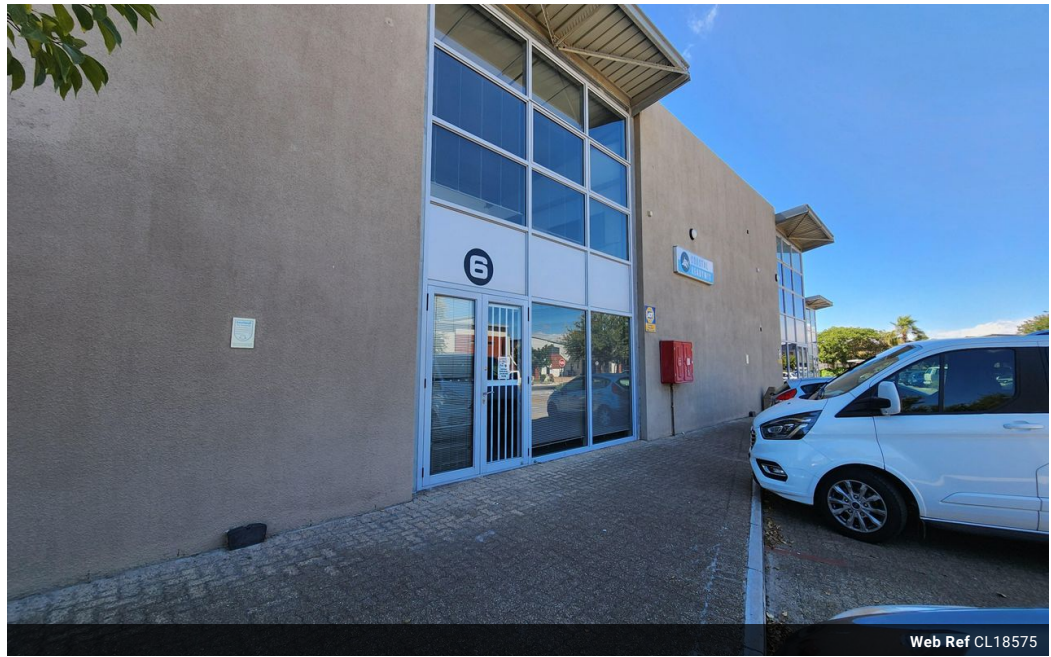
Nico Human
Non-Principal Property Practitioner
Registered with PPRA (FFC 113 663 3)
082 770 2128

nico.human@rawson.co.za

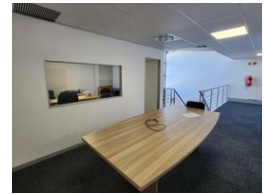
Contact Rawson Commercial
Cape Metropole - Blouberg Franchise

021 556 2474

9 Blaauwberg Road
Blouberg
7441



Web Ref CL18575



R21,875 pm

Gross Monthly Rental R21,875 Excl. VAT

0 3

175m² OFFICE TO LET IN BRACKENFELL

****Prime Office Space to Rent - 175m² in Brackenfell****

This ****175m² office space**** is strategically located just off Brackenfell Boulevard, offering excellent visibility and ****signage opportunities**** for your business. With easy access to major roads like ****Amandel Road****, ****Cecil Morgan Road****, ****Bottelary Road****, ****R300****, and the ****N1****, this space provides unbeatable convenience for clients and staff alike.

Designed for versatility, this office space features a ****spacious open-plan layout**** that can easily be customized to suit your needs. It's ideal for ****retail****, ****administrative operations****, or even as a ****base of operations****. The unit includes a ****standard reception area****, ****four private offices****, and a ****boardroom**** perfect for meetings and presentations.

Key features include:

Features

Building Name	Unit 6				
Zoning	Industrial				
Interior	Air Conditioning		Exterior		Sizes
	Yes	Yes	Security	Yes	Floor Size
		3	Open Parking Bays	3	Building Height
					175m ²
					7m

