



Nico Human
 Non-Principal Property Practitioner
 Registered with PPRA (FFC 113 663 3)
 082 770 2128
 nico.human@rawson.co.za



Rudi Papenfus
 0849838226
 rudi.p@rawson.co.za

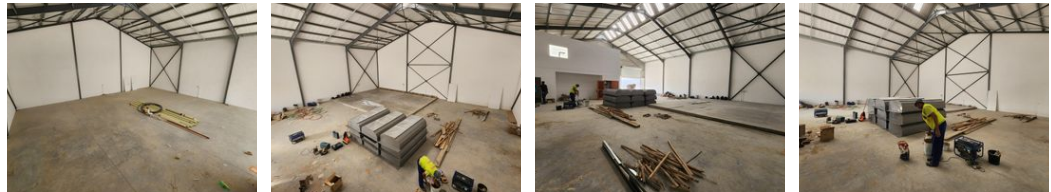
Contact Rawson Commercial
 Cape Metropole - Blouberg Franchise

021 556 2474

9 Blaauwberg Road
 Blouberg
 7441



Web Ref CL18774



R74,200 pm

Gross Monthly Rental R74,200 Excl. VAT

0 8

834m² WAREHOUSE TO LET IN FISANTEKRAAL

****Brand New 834m² Warehouse in Fisantekraal Industrial - Ideal for Warehousing and Distribution****

This newly built 834m² warehouse is available for rent in Fisantekraal Industrial, situated within a secure, access-controlled business park with excellent connectivity via Wellington Road. Offering top-tier warehouse space, this unit is perfect for warehousing, light manufacturing, distribution, or as a base of operations.

****Key Features:****

- Two large reception areas
- Two open-plan offices upstairs
- Separate ablutions for office and warehouse staff
- Two large roller shutter doors for seamless loading and offloading
- Ample parking space
- Excellent height to eaves and peak
- 3-phase, 60-amp power
- Spacious warehouse floor with great natural light

Features

Building Name	Unit 3			Sizes	
Zoning	Industrial			Floor Size	834m ²
Interior		Exterior		Building Height	7m
Power 3 Phase	Yes	Open Parking Bays	8		
Power Amps	60				

