



Gavin Rudolph
 Non-Principal Property Practitioner
 Registered with PPRA (FFC 117 094 8)
 082 554 3784
 gavin.r@rawson.co.za

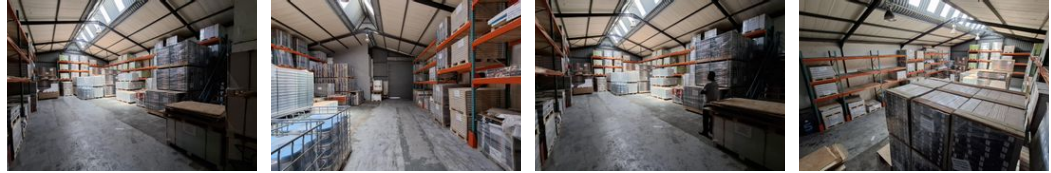
Contact Rawson Commercial
 Cape Metropole - Blouberg Franchise

021 556 2474

9 Blaauwberg Road
 Blouberg
 7441



Web Ref CL18467



R20,250 pm

Gross Monthly Rental R20,250 Excl. VAT

0 3

270m² WAREHOUSE TO RENT WITH GOOD EXPOSURE

This unit presents prime commercial space centrally located on Voortrekker Road, just off Jakes Gerwel granting seamless accessibility and connectivity, positioning it as a prime choice for businesses seeking a strategic location.

- Key features include:
- * Night shift manned security
 - * 3 parking bays + loading bay
 - * 4.5m roller shutter door
 - * Open-plan warehouse
 - * 60 amp 3-phase power
 - * Factory toilet
 - * Reception area
 - * 1st floor office

Maitland's industrial landscape continues to flourish attracting a diverse spectrum of businesses ranging from manufacturing to

Features

Zoning Industrial

Interior

Power 3 Phase Yes
 Power Amps 63

Exterior

Security Yes
 Open Parking Bays 3
 Parking Ratio 1 bays / 100 m²

Sizes

Floor Size 270m²

Extras

Additional Security Levy PM: R653 ex vat

