



Gavin Rudolph
 Non-Principal Property Practitioner
 Registered with PPRA (FFC 117 094 8)
 082 554 3784
 gavin.r@rawson.co.za

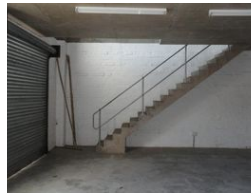
Contact Rawson Commercial
 Cape Metropole - Blouberg Franchise

021 556 2474

9 Blaauwberg Road
 Blouberg
 7441



Web Ref CL18767



R9,500 pm

Gross Monthly Rental R9,500 Excl. VAT

0 2

Industrial Workshop for Lease in Maitland

The Old Timber Yard presents an excellent opportunity with this duplex Industrial Workshop available to let in Maitland. This versatile space features roller shutter access allowing for a workshop on the ground floor and office/storage upstairs. Located in a secure Business Park with easy access and parking, this property would suit design, craft, light industrial, or artisan tenants.

- Centrally located for easy access to greater Cape Town (N1, N2, M5, N7)
- Great for distribution and service businesses
- Floor Space: 117 sq. m
- Amenities: CCTV, Fibre on site
- Small Kitchen
- Green Landscape
- Business Park: 7th Ave Park
- Secure facility with easy access and parking

Address: The Old Timber Yard 27 -7th Avenue Maitland 7405 Positioned in the well-established 7th Ave Park this workshon offers

Features

Zoning Industrial

Interior

Air Conditioning Yes
 Power 3 Phase Yes
 Power Amps 60

Exterior

Security Yes
 Open Parking Bays 2
 Parking Ratio 2 bays / 100 m²

Sizes

Floor Size 117m²

